



## „FLAM – Feel like a migrant multicultural approach in teaching”

is a Grundtvig Multilateral Project.

Our aim is to develop and implement the concept of a multicultural teaching approach as a new strategy and method in teaching, through workshops for trainers, teachers and other educational staff.



### Project partnership:

Volkshochschule  
im Landkreis Cham e.V.  
[www.vhs-cham.de](http://www.vhs-cham.de)

Anniesland Research  
Consultancy Limited  
[www.arc-researchers.com](http://www.arc-researchers.com)

BEST  
Institut für berufsbezogene Weiter-  
bildung und Personaltraining GmbH  
[www.best.at](http://www.best.at)

Instituto Municipal De Formacion y  
Empleo Ayuntamiento De Granada  
[www.imfegranada.es](http://www.imfegranada.es)

IRFA SUD  
[www.irfasud.fr](http://www.irfasud.fr)

Prodiverse Ltd  
[www.prodiverse.net](http://www.prodiverse.net)

Carpathian Foundation Romania  
[www.carpathianfoundation.org](http://www.carpathianfoundation.org)

Der Verband der Schweizerischen  
Volkshochschulen  
[www.up-vhs.ch](http://www.up-vhs.ch)



### Lifelong Learning Programme

This project has been funded  
with support from the European  
Commission.

This publication reflects the  
views only of the authors, and  
the Commission can not be held  
responsible for any use which  
may be made of the information  
contained therein.

Project number 141816-LLP-1-  
2008-1-DE-Grundtvig –GMP

Grant agreement number 2008-  
3440/001-001



FLAM – Feel like a migrant  
multicultural approach in teaching

[www.flam-project.eu](http://www.flam-project.eu)



## „Feel like a migrant”

Our project is a migrant integration project targeted at teachers, trainers and other educational staff who in everyday working life have personal contact with migrants.

Our project is aimed at developing and implementing the concept of a multicultural teaching approach as a new strategy and method in teaching, through workshops for trainers, teachers and other educational staff.



It is hoped that by the end of the project, there will be a better understanding of culture, not only other people's but also one's own, and its implications, as a complex process in which people become members of communities, form basic attitudes, values and norms and construct a basic for facilitating the process of integration into society.

Trainers, teachers and other educational staff equipped with multi-cultural competencies are able to take into account the cultural diversity of learners, to better understand culture and its implications for the learning process and, last but not least, they are more flexible in their changing roles in adult learning.



# FLAM

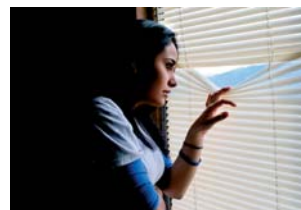
## Feel like a migrant



Our partnership aims to develop innovative methods for the workshops in order for the participants to „**feel like a migrant**” and thereby enhance their empathy in their daily contact with migrants.



Additionally, we want to promote an awareness of the importance of cultural and linguistic diversity in Europe and to promote understanding of cultural backgrounds and provide reflection in order to increase tolerance and to reduce prejudice and xenophobia.



Our project website:

[www.flam-project.eu](http://www.flam-project.eu)